




*Now Loading - Safety Compliance at the Speed of Productivity*

**NEW AGE  
INDUSTRIAL  
NEW AGE**

American Designed + Manufactured 



**MODEX26**

GEORGIA WORLD CONGRESS CENTER  
ATLANTA // APRIL 13-16  
MODEXSHOW.COM powered by 

**Booth B15719**

Boost your warehouse efficiency with custom aluminum equipment from New Age Industrial. We specialize in designing and manufacturing innovative solutions, including order picking solutions, shelving, and more, all proudly made in the USA.

Our expert team works closely with you to understand your unique challenges and deliver customized equipment that improves productivity, reduces costs, and enhances worker safety.

*Scan For  
More!*



- Videos
- Product Request Form
- Booth Recap
- Specifications



# DWG54431 & 54548 | Pick/Put Wall and Cart

Lightweight Aluminum Wall Frame and Cart for an AMR Assisted Pick/Put System.



54431

Dimensions =  
26"W x 71<sup>5</sup>/<sub>16</sub>"H x 47"D  
Net Weight = 94 lbs.



54548

Dimensions =  
56<sup>1</sup>/<sub>4</sub>"W x 74"H x 23"D  
Net Weight = 35 lbs.

## DWG54514 | AMR Picking Cart

Combine AMRs with detachable picking carts for seamless utilization of both workers and robots. This allows product to be queued up without having any AMRs present.



Dimensions = 54 <sup>1</sup>/<sub>2</sub>" W x 35 <sup>3</sup>/<sub>8</sub>" H x 57 <sup>5</sup>/<sub>16</sub>" L  
Deck Height = 12 <sup>3</sup>/<sub>8</sub>"  
Net Weight = 135 lbs.  
Weight Capacity = 1,200 lbs.

# Hyperscale Server | DWG51851R Crash Cart

a specialized, mobile, and ergonomic workstation designed for rapid, on-site troubleshooting and maintenance of servers, switches, or storage, particularly when remote access (IP KVM) fails.



Features:

- Static Dissipative UHMW on each shelf.
- Electro-Static Dissipating (ESD) casters.
- Sliding Shelf for supported server movement.

Dimensions = 44" W x 87 ¾" H x 42" L

Deck Height = 4 ⅝"

Net Weight = 389 lbs.

Weight Capacity = 1,500 lbs.



## DWG54552 | AS/RS Lightweight Pallet

- Maximizes vertical capacity.
- Reduces labor dependency and forklift travel time.
- Automates heavy, dangerous, or precise, repetitive tasks.
- Suitable for extreme temperatures.



Dimensions = 40" W x 6" H x 48" L

Net Weight = 37.5 lbs.

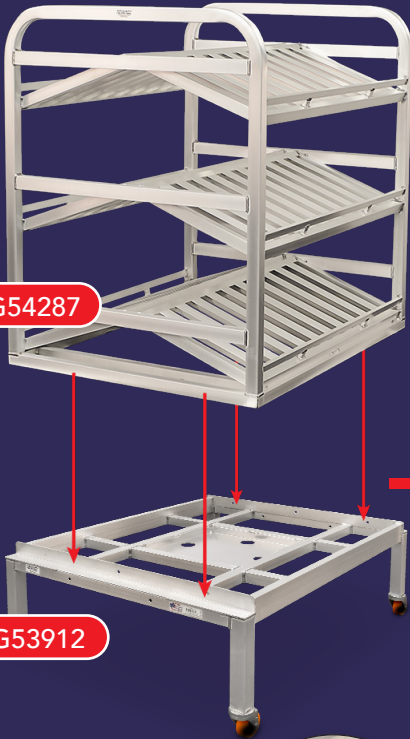
Static Weight Capacity: 15,000 lbs.

Dynamic Weight Capacity: 2,000 lbs.

Rackable Weight Capacity: 2,000 lbs.

# Top Modules

Adapt your AMR to the current system and processes.



**Top modules are versatile and can be changed as needed to support different tasks.**

These modules allow AMRs to adapt to your systems and processes; seamlessly integrating robotic automation to complement your current operations.

**Our Base Module is compatible with a variety of top modules.**

Top modules bolt securely in place.

**Base is made-to-order in order to accommodate your AMR precisely.**

**NEWAGE  
INDUSTRIAL  
NEWAGE**

# Small Product Movement.

In ecommerce and micro-fulfillment centers, custom shelving, racks and carts support order fulfillment.

Tired of slow order fulfillment and labor shortages? Experience the power of warehouse automation. Designed for seamless integration with your existing fleet of Autonomous Mobile Robots (AMRs) or Automated Guided Vehicles (AGVs), our picking modules utilize self-driving robots to transport picking carts throughout your facility; improving order fulfillment speed, reducing labor costs, and enhancing worker safety.

Dimensions = 48" W x 83<sup>7</sup>/<sub>8</sub>" H x 40" D

Net Weight = 200 lbs.

Weight Capacity = Contingent on Robot Capacity.

- ✓ Seamless Integration.
- ✓ Enhanced Efficiency.
- ✓ Increased Order Fulfillment Speed.
- ✓ Optimized Robot Performance.
- ✓ Reduced Labor Costs.
- ✓ Improved Worker Safety.

Large upper bay for bulk items.

Nine, 15" x 19" bins.



DWG53597

Solid Shelf

T-Bar Shelves

Solid Shelf



# Order Picker Platforms

Units include solid aluminum shelves that allow boxes and totes to slide for easy loading and unloading. Heavy duty shelves are easily added, removed, or repositioned to maximize efficiency. Shelves are angled back towards the sides to keep picked items contained.

- Lightweight amplimesh sides keep product contained without obstructing the operator's view.
- Aluminum fork pocket includes a replaceable, solid oak "lock block".
- Equipped with handle and heavy-duty casters for manual maneuvering.
- Anti-slip tape on platform and shelves.
- Can be customized to fit your individual picking needs.



- **Replaceable oak block** allows order picker to securely grab the cart.
- **Removable shelves** with anti-slip tape keep boxes from sliding during transport.

**99664R**

**Dimensions = 40"W x 76"H x 48"L**

**Deck = 46¾"W x 37½"L**

**Deck Height = 4¾"**

**Net Weight = 253 lbs.**

**Weight Capacity: 250 lbs. per shelf  
2,000 lbs. total**



## Optional WEAR STRIPS

**60513**



### Save Wear & Tear

To The Oak Block Gripper On  
Order Picking Carts & Platforms



### Removable Shelves

- Flip shelves up, out of the way or remove them completely.

#### DWG50815C

Dimensions = 40"W x 76 3/4"H x 52"L

Deck = 40"W x 48"D

Deck Height = 5 5/8"

Net Weight = 258 lbs.

Weight Capacity = 250 lbs. per shelf  
2,000 lbs. total



- Shelves are easily repositioned and angled for product retention.

#### DWG51474C

Dimensions = 40"W x 88"H x 48"L

Deck = 40"W x 46 3/4"L

Deck Height = 5 3/8"

Net Weight = 283 lbs.

Weight Capacity = 250 lbs. per shelf  
2,000 lbs. total



#### DWG54454T

Dimensions = 40"W x 64"H x 52"L

Deck = 40"W x 20"L

Deck Height = 4 5/8"

Net Weight = 300 lbs.

Weight Capacity = 250 lbs. per shelf  
2,000 lbs. total



## DWG53521C | High-Capacity Picking Platform

The spacious 40" x 48" platform features 52" high bar back and sides and non-skid tread to ensure safe use.

The unit's 2,000 lb. capacity allows it to safely accommodate personnel along with tools, equipment, or merchandise.



Dimensions = 43 1/8"W x 65"H x 49 1/2"L | Deck = 40"W x 48"L  
Deck Height = 5 5/8" | Net Weight = 185 lbs. | Weight Capacity = 2,000 lbs.

**NEWAGE**  
INDUSTRIAL  
**NEWAGE**

# Channel Pallets | 99557



**FIRE RESISTANT**  
**RECYCLABLE**  
**UV RESISTANT**  
**METAL DETECTABLE**

Designed specifically for easy cleaning and sanitation, aluminum pallets have smooth surfaces and are non-absorbent. Constructed using channel with all seams fully welded and sealed, there are no enclosures that trap dirt and bacteria. These primary grade aluminum pallets will outlast plastic 10 to 1!

- Lightweight - 50 lbs.
- Stackable and Nestable
- Lifetime Guarantee against rust and corrosion.

**Dimensions = 40"W x 5"H x 48"D**

**Net Weight = 51 lbs.**

**You Tube**™ See This Product In Action!  
<http://www.youtube.com/user/NewAgeInd>

**New Age can customize pallets to fit your exact size requirements.**

# Tube-Frame Pallets | 99613



**FIRE RESISTANT**  
**RECYCLABLE**  
**UV RESISTANT**  
**METAL DETECTABLE**

**Our aluminum pallets outlast plastic pallets 10 to 1!**

- Constructed of primary grade aluminum, all seams fully welded and sealed.
- Framework is completely enclosed, no open tubing that damages easily or collects dirt and debris.
- Lifetime Guarantee against rust and corrosion, perfect for wet or damp environments.
- Easy to clean by hand, with a power washer, or steamer.
- 100% Aluminum. Fully recyclable!
- Stackable and Nestable.

**Dimensions = 40"W x 5 1/4"H x 48"D**

**Net Weight = 48 lbs.**

## LOAD WEIGHTS:

STATIC	30,000 LBS.
DYNAMIC	5,000 LBS
RACKABLE	5,000 LBS
TRUCKLOAD	510 T.L.
ALUMINUM WEIGHT	49 LBS.



Wooden pallets of the same size weigh approximately 42 pounds, typically hold HALF the weight of our aluminum pallets, cannot be recycled, and are NOT fire resistant.

# DWG52136 | Rivet Pallet

Designed to secure machinery that requires frequent moving. Includes threaded rivets to bolt equipment to the pallet.

- Customized version of our Tube-Frame Pallet.
- Includes all the same advantages AND your specific requirements!

**Dimensions = 24"D x 5¼"H x 48"L**

**Rivet Nuts Location Tolerance = +/- .0625"**

**Net Weight = 30 lbs.**

**Weight Capacity = 10,000 lbs. Static**



**New Age can customize pallets to fit your exact size requirements.**



# DWG99887 | Solid Top Pallet

**Dimensions = 40¼"W x 5⅝"H x 48¼"D**

## LOAD WEIGHTS:

STATIC	30,000 LBS.
DYNAMIC	5,000 LBS
RACKABLE	5,000 LBS
ALUMINUM WEIGHT	84 LBS.

## Built-To-Order | Aluminum Pallets

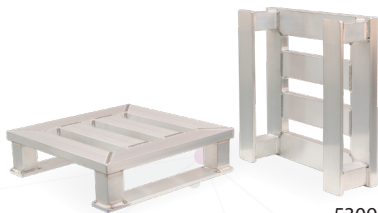
### Strap Base Pallet

- Top frame = 1" x 3" tube
- Uprights = 2" x 2" tube
- Base = ¾" x 2 ¼" strap

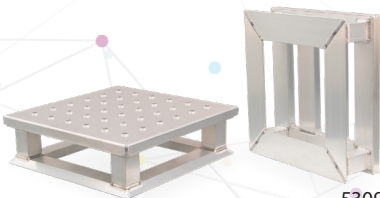
### Pallet with Perforated Cover

- Four-way pallet with perimeter base support.
- Removable, perforated cover is ½" thick.

Removable Perforated Tread Cover



53095



53096

# Ladder Cart

## Reach new heights with this three-step ladder cart!

Built with user safety as a top priority, this three-step ladder cart features a continuous-grip extended handle and spring-loaded, full contact ladder stops. Extra wide steps are welded and bolted into place to provide sure footing while ascending and descending.

Heavy-duty caster mounts are welded to the all-welded tubular base frame for durability.



- a. 99945 Cup Holder
- b. 99946 Pencil Holder



**99640**

**Dimensions = 22"W x 69½"H x 51½"D**

**Net Weight = 90 lbs.**

**Weight Capacity = 800 lbs.**

# Ergo Stands



The design of common elements, such as workstations, have a significant impact on the occupational health, safety, and wellbeing of workers. Many jurisdictions now place a legally enforceable duty of care on designers and employers to ensure a safe work environment.

These lightweight, aluminum stands help level the height differences among employees, providing a safe and comfortable work height for everyone.

**NEWAGE  
INDUSTRIAL  
NEWAGE**

# 96856 | Folding U-Boat

Ideal for transporting heavy loads from the back room to the floor area or cooler this unit easily folds up and stores on end taking up a small footprint of storage space.

- Six wheel design allows the unit to turn on a dime.
- Designed to maneuver easily through narrow spaces.
- **Stores on end**, requiring minimal storage space.



**Dimensions = 16"W x 64"H x 64 3/4"L (unfolded)**  
**16"W x 14"H x 64 3/4"L (folded)**

**Deck = 16"W x 60"L**

**Deck Height = 9 3/8"**

**Net Weight = 61 lbs.**

**Weight Capacity = 1,500 lbs.**

# 95241 | Folding "L" Cart

Designed for transporting heavy loads from the backroom to the sales floor, this "L" Cart boasts 7½ square feet of deck space and conveniently folds up to use less than two square feet of storage space.

- Has **TWO TIMES** the capacity of standard carts.
- Ergonomic Design Features: Rounded handles and nose.



**Dimensions = 18"W x 69 7/8"H x 66 15/16"L (unfolded)**  
**18"W x 17 1/8"H x 61 7/8"L (folded)**

**Deck Size = 18"W x 60 1/2"L**

**Deck Height = 6 3/8"**

**Net Weight = 49 lbs.**

**Weight Capacity = 1,200 lbs.**

+1"



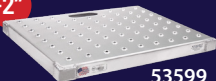
53598

+6"



53601

+2"



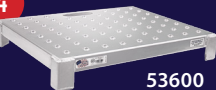
53599

+8"



53604

+4"



53600



53599

ANTI-SLIP DECK

# DWG54116 | Tote Delivery Cart



## Pick orders and stock shelves with our new Tote Delivery Cart!

- Four slanted shelves provide two-sided easy access to contents and product visibility.
- Dual grip handles allow the cart to maneuver easily through aisles.

**Dimensions = 42" W x 68" H x 26" L**

**Net Weight = 43.3 lbs.**

**Weight Capacity = 200 lbs. per shelf**

**800 lbs. total (uniformly distributed)**

# 50548 | Carry-All Cart

This feature picking cart is an excellent example of how New Age can easily Level Up any product to maximize efficiency at your facility!

**Dimensions = 18" W x 60" H x 49" L**

**Shelf Spacing:**

**Top = 14½"**

**Bottom = 21"**

**Ship Weight = 63.69 lbs.**



Clipboard

Dual Handles

Writing Ledge

Document Bin

Scanner Holster

"Ergo" Handle



# 53993 | Slanted Picking Cart



The heavy-duty Slanted Lug Merchandiser has three shelves and is designed to hold three lug tubs on each shelf for a total of nine (9) lug tubs. Great for sorting product with easy loading into the slanted tubs, allowing the operator to see inside each tub.

- T-Bar Shelves - two slanted and one flat base shelf.
- Ergonomic V-style handle.
- Designed for narrow aisle picking.
- Can be custom built to fit your individual picking needs.

**Dimensions = 59" W x 65½" H x 22" D**

**Net Weight = 73 lbs.**

**Weight Capacity = 600 lbs.**

## Enclosed Cabinet | 1290

- Heavy-Duty Enclosed Bun Pan Rack (Cabinet) with reinforced door and 6" x 2" heavy duty casters are attached to a welded caster plate providing more caster strength.
- This cabinet has 1½" spacing. Triple reinforced interior.
- Units hold the following pans: 13" x 18", 14" x 18" and 18" x 26" (by the lip).

**Dimensions = 20¾"W x 68"H x 27½"L**

**Net Weight = 101 lbs.**

**Weight Capacity = 1,000 lbs.**



## 6-Lug Cart | 1263

Uprights are constructed of heavy-duty, ergonomic "D" tube that provides strength and durability but is easy on operators' hands. Base framework is reinforced with threaded caster mounts, this cart was made to be pushed around!

- Designed to easily organize and store product, utilizing vertical space.
- Swivel casters include polyurethane tread that is quiet and easy to maneuver.

**Dimensions = 18¾"W x 72"H x 26½"L**

**Net Weight = 32 lbs.**

**Weight Capacity = 350 lbs.**

**RGY16825 - Lug Tubs** O.D. = 15½" W x 8¾" H x 25" L  
**0361 - Lid**



## Security Cabinet | 97621

- Stationary, three-shelf unit.
- Locking hasp door.
- Plate casters.
- Secure, visible mesh, walls.

**Dimensions = 49"W x 71"H x 26¾"D**

**Net Weight = 170 lbs.**

**Weight Capacity = 300 lbs. per shelf**  
**900 lbs. total**



# This Shelving **NEVER** Rusts or Corrodes... **GUARANTEED.**

Aluminum Shelving for walk-in coolers eliminates the need for shelving replacements due to rusting.

- **Cantilever Shelving** is easily adjustable with no front posts, providing **more storage space per shelf**.
- **Adjust-A-Shelf Shelving** is easily adjustable using only an Allen wrench.

Mix-and-match between Solid, T-Bar and Bar Style Shelves to create your own unit.

Posts and shelves come in a variety of sizes to maximize your space.



Adjust-A-Shelf Shelving  
- Heavy Duty  
*(T-Bar style shelves shown with optional casters.)*



## We've Made Ordering **EASY!**

### One Number = One Complete Unit

Visit [NewAgeIndustrial.com](http://NewAgeIndustrial.com)  
for a complete listing.

**SHELVES ARE EASILY  
REPOSITIONED...  
NO TOOLS REQUIRED!**

**JUST LIFT & CLICK!**



"Quick Change" Cantilever Shelving  
- Heavy Duty

**NEWAGE  
INDUSTRIAL  
NEWAGE**

[NewAgeIndustrial.com](http://NewAgeIndustrial.com) • Made in the USA

# Wall Shelves

## T-Bar | 1121

Dimensions = 20" x 36"  
Weight Capacity = 700 lbs.

\*Also available with  
Hanging Bar



## Solid - 18 Gauge 1125

Dimensions = 12" x 36"  
Weight Capacity = 150lbs.



## Solid - 12 Gauge 1125A

Dimensions = 12" x 36"  
Weight Capacity = 300 lbs.



## Inverted T-Bar 97285

Dimensions = 20" x 36"  
Weight Capacity = 500 lbs.



**Weight Capacity =** Determined by installation method and type of wall



**NEW!**

## **Machine Guard Fencing**

**Durable Aluminum Industrial Safety Fencing**



Protect your workforce and ensure compliance with the New Age Industrial Heavy Duty Aluminum Machine Guard Safety Fencing. Engineered for superior performance in demanding industrial environments, this modular safety fencing system creates a robust, physical barrier around machinery, robotic work cells, and automated equipment.

- ✓ **Exceptional Durability**
- ✓ **Employee Safety**
- ✓ **Highly Customizable & Modular**
- ✓ **Clear Visibility**
- ✓ **Easy Installation**
- ✓ **Strong Product Guarantees**



NewAgeIndustrial.com • Made in the USA