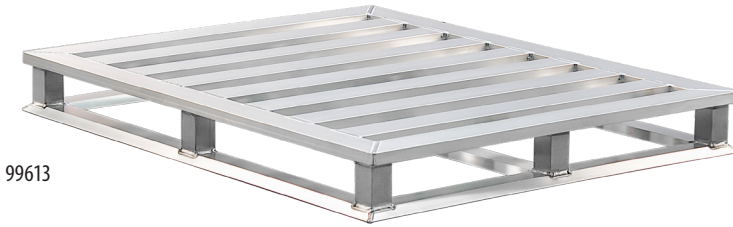
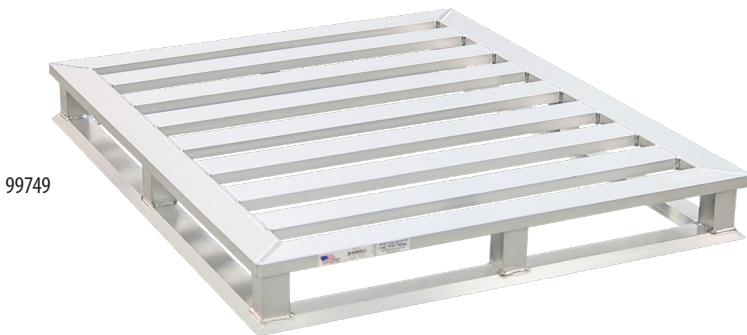
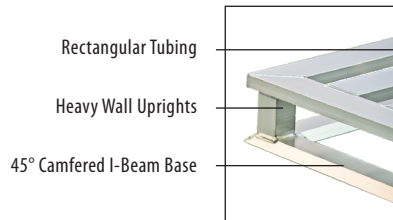


Aluminum Pallets -Tube Frame



99613



99749

- All-welded construction.
 - Fireproof
 - Recyclable
 - Metal Detectable

- Sealed tube, all welded frame construction

Four-way pallets are constructed of $\frac{3}{4}$ " x $3\frac{3}{8}$ " pallet base, risers are constructed of 2" x 2" x .2175" wall tubing.

Top framework and laterals are constructed of 1" x 3" x .09" wall tubing.

- Lifetime Guarantee against rust and corrosion.

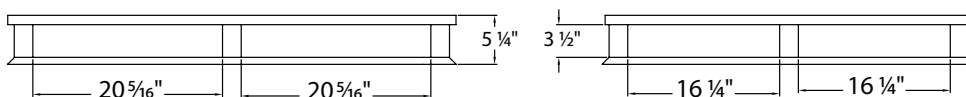
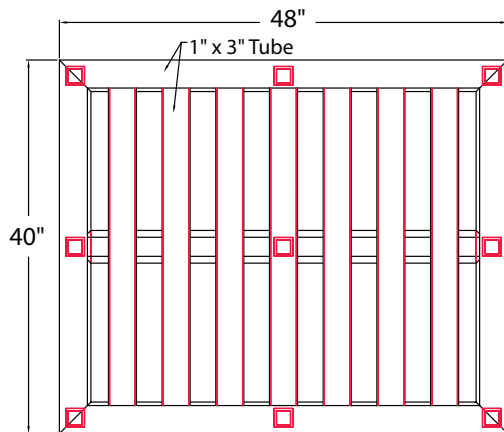
► Tube Frame Pallets

Model No.	Size W-H-D	Net Lbs.	Ship Lbs.
99613*	40" x 5 $\frac{1}{4}$ " x 48"	48	51
99749	40" x 5 $\frac{1}{4}$ " x 48"	45	53
50788	48" x 5 $\frac{1}{4}$ " x 48"	51	53

* Equipped with center base tube as shown.

LOAD WEIGHTS:

	99613 & 99749	50788
STATIC	30,000 LBS.	20,000 LBS.
DYNAMIC	5,000 LBS.	4,000 LBS.
RACKABLE	5,000 LBS.	4,000 LBS.
TRUCKLOAD	510 T.L.	442 T.L.
ALUMINUM WEIGHT	49 LBS.	51 LBS.



New Age Industrial Corp., Inc. || NewAgeIndustrial.com || Made in the USA

PO Box 520 • 16788 US Hwy 36 • Norton, Kansas 67654 || Phone: (800) 255-0104 • (785) 877-5121 || Fax: (877)-877-7687 • (785) 877-2616

This information is for general sales and engineering use only. New Age Industrial reserves the right to modify or make changes at any time, without notice, to materials and specifications.