

Project: _____

Item: _____

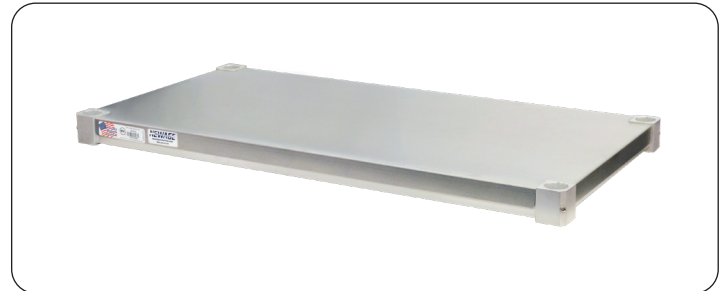
Quantity: _____

Adjustable Shelving Units - Solid Brute Series | Heavy Duty



Ideal for smaller, lighter items, solid shelves feature a smooth surface that is easy to clean and allows boxes to slide for effortless loading and unloading.

- **Weight capacity of 800 lbs. per shelf.**
- Lifetime Guarantee against rust and corrosion.
- Lifetime Guarantee against workmanship and material defects.



New Age Industrial Corp., Inc. || NewAgeIndustrial.com || Made in the USA 

PO Box 520 • 16788 US Hwy 36 • Norton, Kansas 67654 || Phone: (800) 255-0104 • (785) 877-5121 || Fax: (877)-877-7687 • (785) 877-2616



This information is for general sales and engineering use only. New Age Industrial reserves the right to modify or make changes at any time, without notice, to materials and specifications.

Adjustable Shelving Units

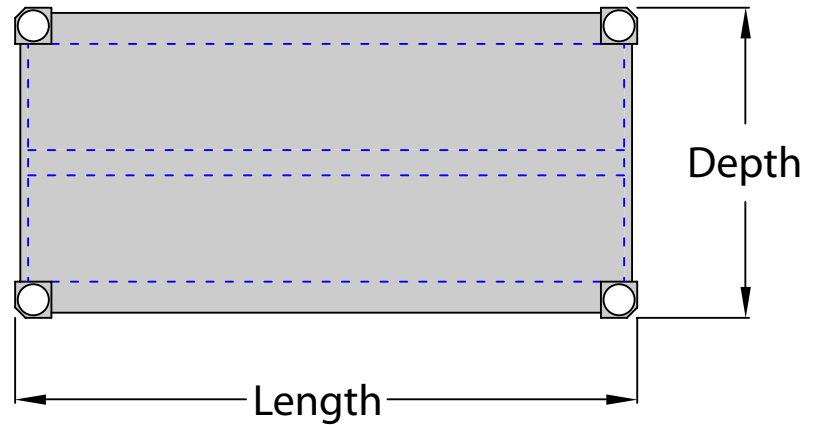
- Solid Brute Series | Heavy Duty

Adjustable Shelving Units

-Solid Brute Series Shelves

| Ordering Code | Shelf Size W-L | Unit Height | Net Lbs. | Ship Lbs. |
|-------------------|----------------|-------------|----------|-----------|
| Two-Tier | | | | |
| 22436BB5 | 24" x 36" | 54 1/4" | 30.2 | 35.6 |
| 22448BB5 | 24" x 48" | 54 1/4" | 35.4 | 45 |
| Three-Tier | | | | |
| 31830BB6 | 18" x 30" | 68 1/4" | 36.4 | 41.4 |
| 31836BB6 | 18" x 36" | 68 1/4" | 44.4 | 41.4 |
| 31842BB6 | 18" x 42" | 68 1/4" | 43.2 | 48.9 |
| 31848BB6 | 18" x 48" | 68 1/4" | 46.9 | 51.9 |
| 31860BB6 | 18" x 60" | 68 1/4" | 54 | 59.4 |
| 31872BB6 | 18" x 72" | 68 1/4" | 61.2 | 66.9 |
| 32036BB6 | 20" x 36" | 68 1/4" | 41.2 | 45.9 |
| 32048BB6 | 20" x 48" | 68 1/4" | 48.4 | 56.4 |
| 32054BB6 | 20" x 54" | 68 1/4" | 52.3 | 60.6 |
| 32430BB6 | 24" x 30" | 68 1/4" | 39.1 | 45.9 |
| 32436BB6 | 24" x 36" | 68 1/4" | 43 | 49.8 |
| 32442BB6 | 24" x 42" | 68 1/4" | 46.9 | 54.6 |
| 32448BB6 | 24" x 48" | 68 1/4" | 50.8 | 63.9 |
| 32460BB6 | 24" x 60" | 68 1/4" | 58.6 | 69.6 |
| 32460BB7 | 24" x 60" | 76 1/4" | 60.1 | 71.2 |
| Four-Tier | | | | |
| 41536BB7 | 15" x 36" | 76 1/4" | 49.6 | 54 |
| 41548BB7 | 15" x 48" | 76 1/4" | 58.8 | 62 |
| 41836BB7 | 18" x 36" | 76 1/4" | 50 | 54 |
| 41848BB7 | 18" x 48" | 76 1/4" | 59.6 | 66 |
| 41860BB7 | 18" x 60" | 76 1/4" | 69.2 | 76 |
| 42036BB7 | 20" x 36" | 76 1/4" | 52 | 58 |
| 42042BB7 | 20" x 42" | 76 1/4" | 56.8 | 65.2 |
| 42048BB6 | 20" x 48" | 68 1/4" | 60.1 | 70.4 |
| 42048BB7 | 20" x 48" | 76 1/4" | 61.6 | 72 |
| 42424BB7 | 24" x 24" | 76 1/4" | 436 | 48 |
| 42430BB7 | 24" x 30" | 76 1/4" | 49.2 | 58 |
| 42436BB7 | 24" x 36" | 76 1/4" | 54.4 | 63.2 |
| 42442BB7 | 24" x 42" | 76 1/4" | 59.6 | 69.6 |
| 42448BB7 | 24" x 48" | 76 1/4" | 64.8 | 82 |
| 42460BB7 | 24" x 60" | 76 1/4" | 75.2 | 89.6 |
| 42472BB7 | 24" x 72" | 76 1/4" | 94 | 108.8 |
| Five-Tier | | | | |
| 51854BB6 | 18" x 54" | 68 1/4" | 75.2 | 84.4 |
| 51854BB8 | 18" x 54" | 84 1/4" | 78.2 | 86.4 |
| 51860BB8 | 18" x 60" | 84 1/4" | 84.2 | 91.4 |
| 51872BB6 | 18" x 72" | 68 1/4" | 93.2 | 101.9 |

Posts are marked in 2" increments.



MATERIAL:

- Framework is constructed of 1 1/2" x 1 3/4" x .125" wall angle. Laterals are constructed of 1 1/4" x 1 1/4" x .070" wall tubing.
- Each shelf has a removable top constructed out of .040" aluminum sheet.
- Posts are constructed of 1 5/16" diameter pipe and are marked at 2" intervals.

GUARANTEE:

- Lifetime Guarantee against rust and corrosion.
- Lifetime Guarantee against workmanship and material defects.

